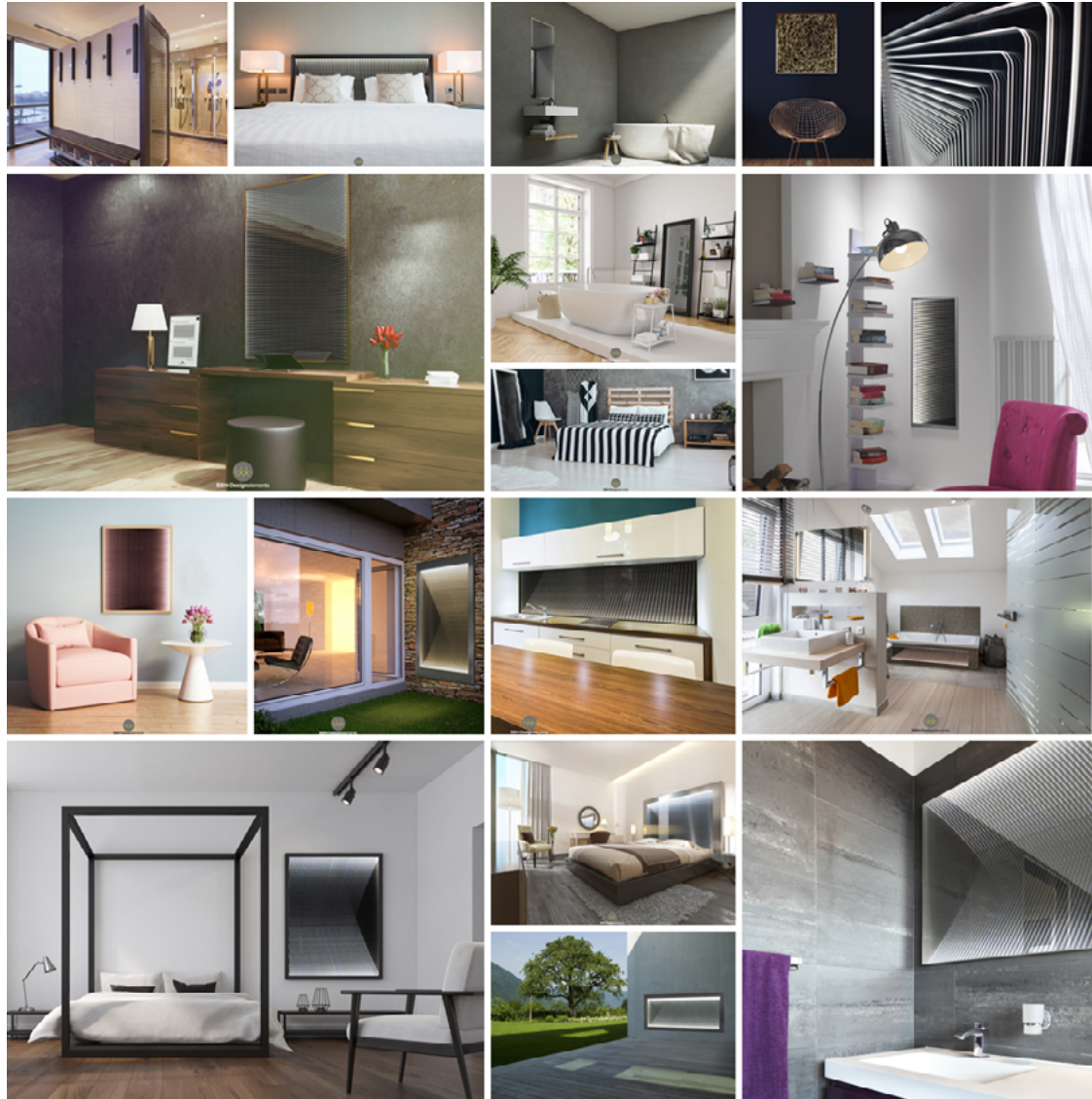
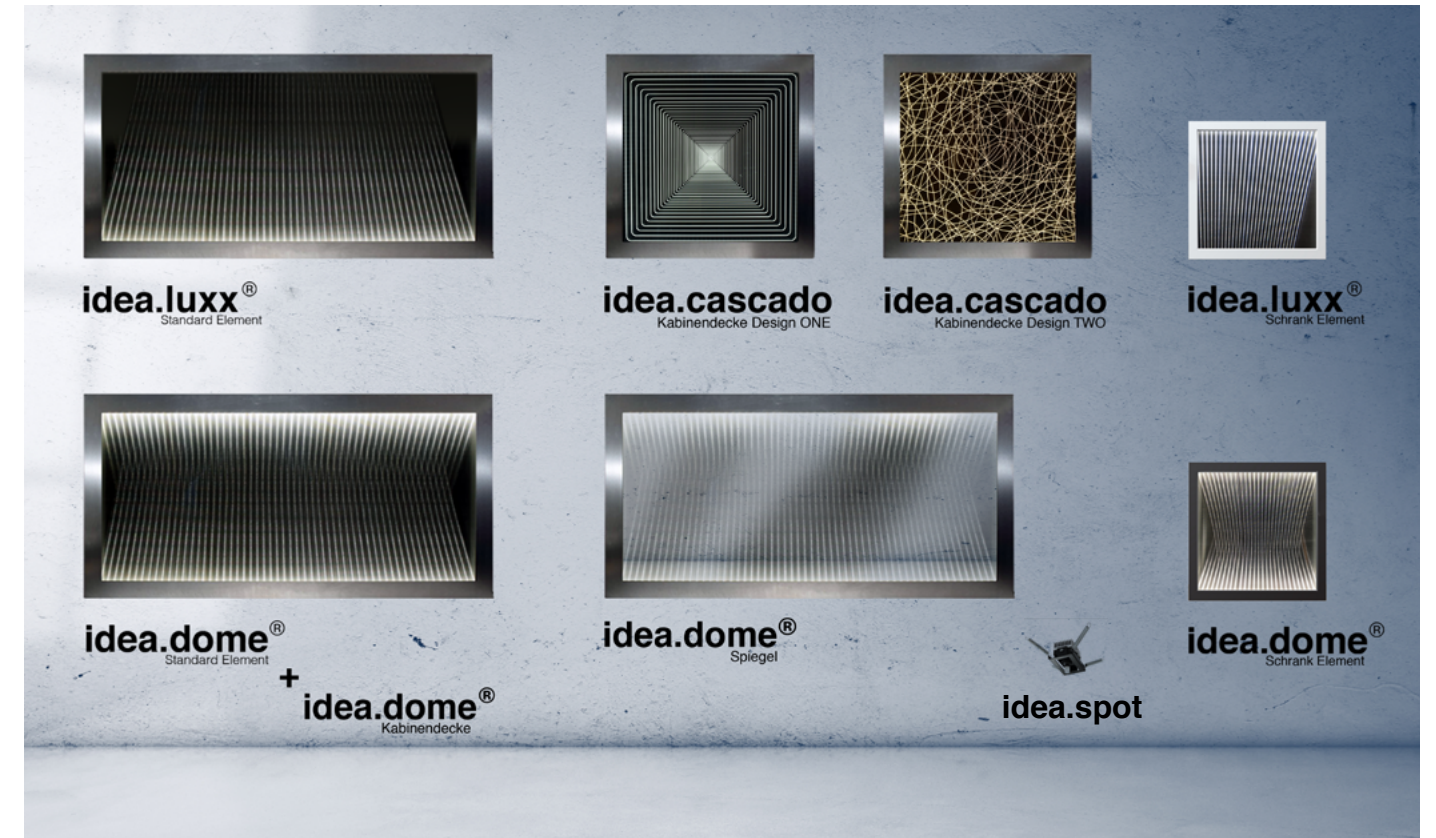




BBH-Designelemente



BBH-Designelemente GmbH
2018 / 2019



Introduction

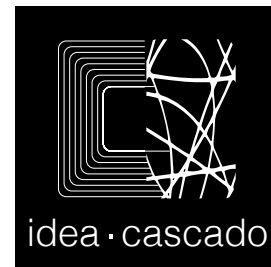
Welcome to our new catalogue. In our catalogue we want to introduce you to our products.

In May 2016 BBH-Designelemente GmbH was founded. Since then, we have been able to develop great cooperations with companies and delight our customers with our products. We designed this catalogue for you, to explain the practicality and possible application areas. You will soon realize that there are no limits to your ideas. We hope you like this little insight into our product world and we can arouse your interest. All of the products advertised here are available and can be ordered.

If you really want to experience our effect of depth, you should visit one of our partners or you should look at www.bbh-designelemente.de. If you have questions, suggestions or interest in a product, do not hesitate to contact us. You can find our contact details on the back side of the catalogue. Now we wish you a lot of creative input with our new catalog.

BBH-Designelemente GmbH.

Technical details and light levels vary depending on the product, size and components installed. For information please contact us.





content

- 6 kitchen
- 8 living room
bedroom
- 10 bathroom
- 12 elevator
- 14 idea.dome
idea.luxx
picta
- 16 idea.cascado
idea.spot
- 18 conclusion

Kitchen

Kitchen back walls

With our products idea.dome, idea.luxx & idea.cascado we want to revolutionize the supplier market. Innovation and benefits do not have to end with a back wall. Over a period of time, kitchen back walls have increasingly become the subject of designers, interior designers and customers. Even in DIY stores you can now get a glass kitchen back wall. With us you get quality and an eyecatcher with a special benefit. The advantage of the „depth effect“ makes your space visually bigger than ever before. Your kitchen will have a highlight, which also gives a cozy sense of space. Upon request, you decide whether it will shine in a cool or warm white. Customize your new kitchen back wall by RGB controlled LEDs or special LEDs that can create a biological day-night rhythm. That day-night rhythm releases the hormone serotonin. This hormone motivates us humans from inside, lifts the mood, and increases our well-being. The daylight is simulated by short-wave light, which is emitted in the blue region of the visible spectrum. In the evening, the short-wave blue rays are replaced by yellowish light and the production of melatonin is triggered.



Melatonin causes us to become calm and tired and thus get better sleep to be able to enjoy a better sleeping. If you want to inform yourself on this subject, you will find under the keyword „light therapy“ more aspects. Through our versatile portfolio we offer you a smartphone controllable system. In this program you can choose intensity, color and more, make adjustments, depending on the ordered system and matching LEDs. This system can be installed on Apple or Android. Depending on the purpose, we recommend the right solution for you!

Now you can order the kitchen rear walls with the function of a normal mirror and switch on request. So you get the experience of the „depth effect“ with the usability of a normal mirror.

Customize your element with us and save yourself big conversions on walls and kitchens! The standard elements are available on our website www.bbh-designelemente.de.



The sizes can be created from 0 - 4500mm. Usually, kitchen mirrors are 500-600 mm high and available by the meter. Our standard element is 500 mm x 1000 mm x 20 mm and can be individually ordered in height and length so that it integrates harmoniously into your kitchen.

Our system can be ordered with special mirrored glass (pictured left), dichroic effect glass (picta) or normal glass (pictured below). If you have special requests, write us an E-Mail.

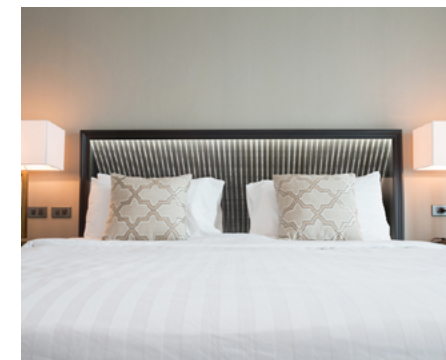




Here you can see an idea.luxx wall panel with mirror function. This element is equipped with a neutral white light color and can be switched on request.

Livingroom & Bedroom

idea.dome, idea.luxx, idea.cascado



An idea.dome, idea.luxx and idea.cascado element can be used almost anywhere. It can be used both as a so-called light window or as normal decorative lighting. The benefit is versatile and can be extended on request with various modifications. You can choose between a stainless steel frame, a complete glass front with colored frame or an acrylic version. In all cases, we are happy to advise you and show you the various options. With a product depth of just 20mm our products offer the right solution for every room. Instead of a picture, you can make every room look bigger than it is!



As you can see on the picture on the left, an idea.dome element is perfect for small spaces like hotel rooms or bedrooms.

Our full light system, which idea.dome, idea.luxx & idea.cascado can represent, for example, how structural barriers can be overcome. This is how an otherwise crushing wall becomes one expressive, comfortable room divider with the additional function of full-fledged lighting. Quality of life through light and spatial depth! Products that help people and do not get in the way.



If you install our elements as a back wall for a bed, it can serve as a light alarm clock, which accompanies a morning by a gentle increase in light in the day and gives the feeling of a sunrise. Through the artificial day-night rhythm You will be woken up stress-free and start your day well.

For example, our products idea.dome & idea.luxx relax your hallway, your living room or a room of your choice, so that you can feel comfortable and not miss a structural window. idea.cascado serves the individualized illumination and can be provided with your desired design!



People spend 87% of their life in buildings. There is often inadequate or incorrect lighting. This often leads to depressions. Control it with intelligent lighting.

Bathroom

Mirror with that certain something



Bathroom mirrors do not always have to be boring. Your new idea.dome or idea.luxx bathroom mirror can be set automatically or manually to a full-fledged mirror or decorative lighting. We have realized this phenomenon with the help of a spy mirror that hides our system. In the evening / night your bathroom will be illuminated by our element and you will not be unnecessarily encouraged by the otherwise bright bathroom light. The mirror reacts to movements and only slowly increases the brightness.

During the day, you can adjust the mirror so that it dims when moving to allow you to see the mirror. At your request, the fogging of the mirror by water vapor can be a thing of the past. With our element you benefit from the depth effect, especially if you have a small, dark bathroom or the dark seasons are at your doorstep. Your space will be bigger than ever and you will feel at ease.

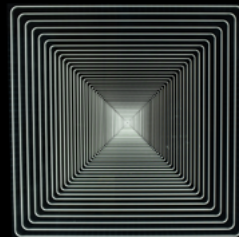
Elevator

Cabin ceilings & wall coverings

An important market for us is the lift ceilings and lighting. Whether new plant or modernization. We have created a unique overall package in this area. Here is a little insight.

idea.dome cabin ceilings are:

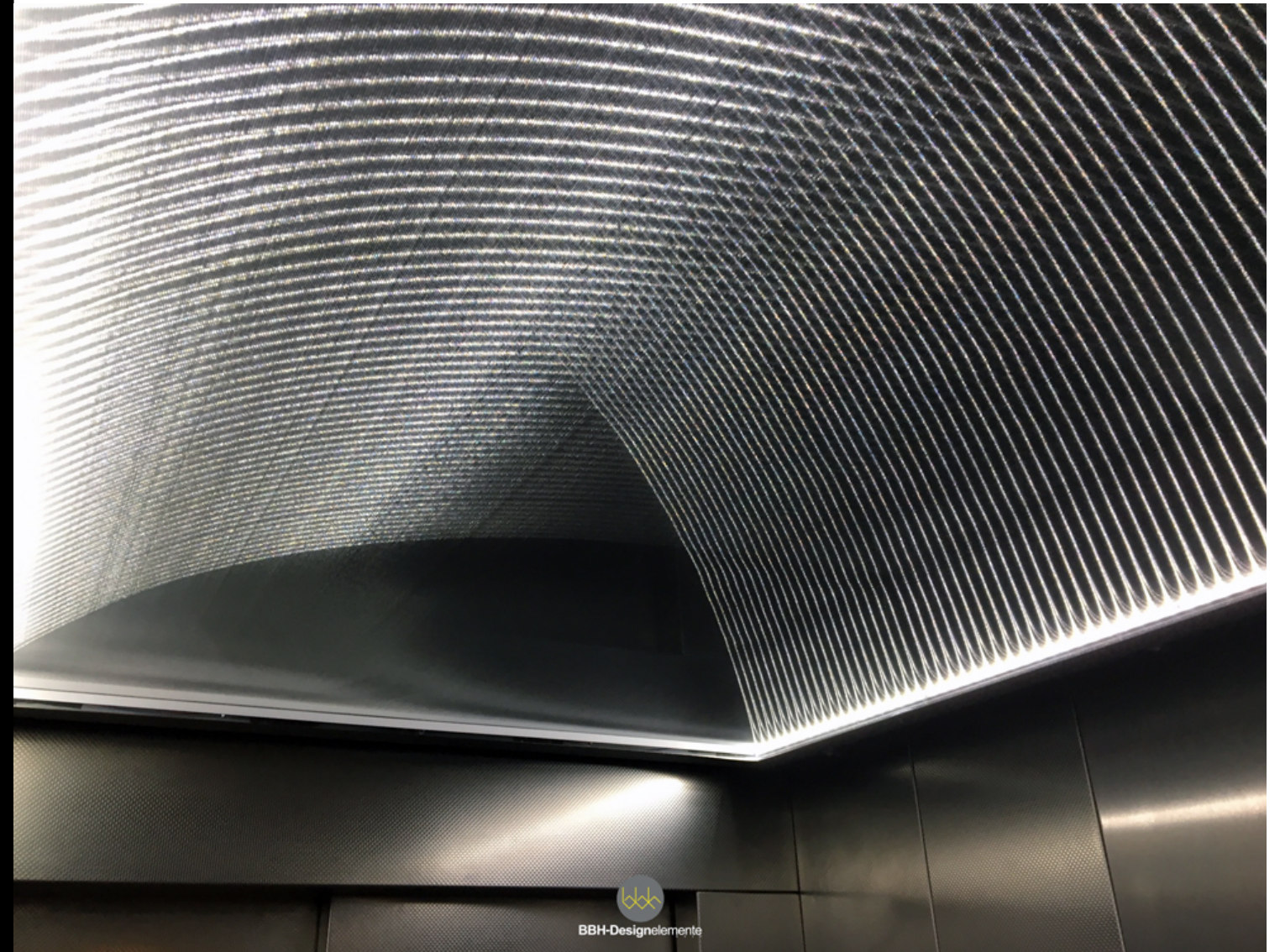
- light weight
- offering an incredible depth effect that provides more visual room height
- suitable for modernization by a quick installation
- reach the prescribed lux value without dazzling the viewer
- have an emergency light function on request and are only 20 mm deep much narrower than standard ceilings. (VSG variant of 40-50mm depending on the equipment)
- fulfills the requirements of EN81 - 20 / 50



idea.cascado



With idea.luxx wall coverings you create even more depth and visual space in every cabin. This helps people with claustrophobia to have a feeling of well-being. You can use an elevator without fear to improve your sense of space. Available are the customary ceiling dimensions and on request special dimensions. For customization a wide range is available for you, which we would like to send you by a separate flyer. All our cabin ceilings you will find on our website!

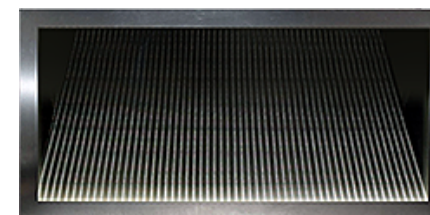




Here you can see an idea.dome standard wall panel. The measurements are 1000mm x 500mm x 20mm. This element is equipped with a neutral white light color.

idea.dome & idea.luxx

Light in the room, room by light!



idea.luxx[®]
Standard Element

idea.luxx is our product for anyone who wants to have more visual depth. It is lit from one side to create the maximum depth and can be used architecturally to play with the effect to make rooms feel great. You can purchase our standard element in the shop or order special dimensions on request. A soft illumination which, with a three-dimensional depth, depending on the viewing angle, creates a completely new spatial experience.

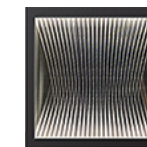
With only **20mm** of product depth, it is suitable for walls, ceilings, and even floors. You can order acrylic panes, glass panes (ESG, laminated safety glass, dichroic) and mirror glass.



idea.dome[®]
Standard Element

idea.dome is our element to create a three-dimensional dome of light. Like idea.luxx it creates a spatial depth, but in idea.dome the light is generated from two sides. This has the advantage that more light is reflected in the room and it is a full-fledged lighting. The dome effect provides a full depth that makes every room look bigger than it really is. The depth of **20mm** remains and is therefore suitable for every wall and ceiling. A spatial experience is generated by refraction with the advantage of homogeneous illumination of the room.

idea.dome can be controlled via smartphone, tablet, via smarthome.



idea.dome[®]
Schrank Element



idea.luxx[®]
Schrank Element



idea.luxx and idea.dome are our lighting elements to create more visual space and to create a positive perception.

We offer our customers a variety of solutions, customizations, and special requests. From the end of March 2018 we have our 3D color effect „**picta**“ for all our products in the program. This creates a different color from every angle, which makes the depth effect without RGB LEDs a colorful experience. Find out more on our website or on Facebook.

Visit our shop for the Standard elements or write us your desired dimensions.

idea.cascado

Light! Customizable!

What is idea.cascado? The idea.cascado series was developed in cooperation with the company MELALUX together to provide the most advanced LED technology to our customers! Nothing is as individualizable in the design as an idea.cascado element!

How does the idea.cascado work?

idea.cascado is a full-fledged illumination by LEDs. High precision lasers engrave a pattern in glass or polymethylmethacrylate! It creates unprecedented patterns, shapes, and above all possibilities! A lighting that will inspire you in brightness and experience because no other lighting can respond to the design needs of our customers as idea.cascado. You want a specific company logo or lettering? No problem! Thanks to laser technology, almost all shapes, patterns and designs are possible.

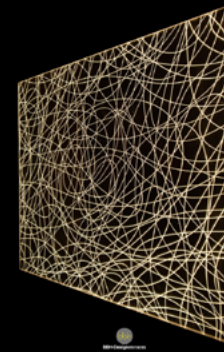
Also available as a cabin ceiling.

idea.cascado meets the requirements of EN 81 20/50.

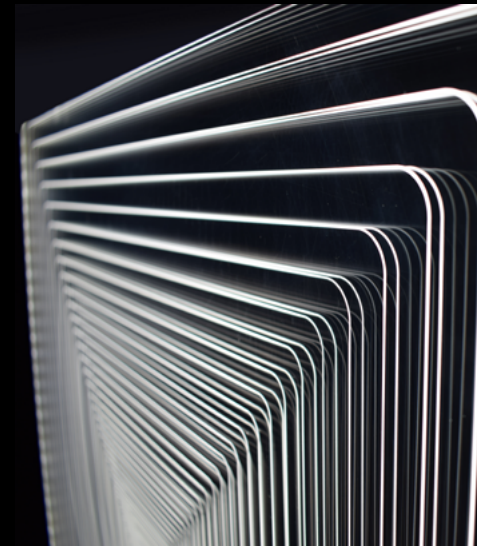
Advantages:

- Product height of only 20mm
- Lightweight
- Easy and quick to retrofit, perfect for modernization
- Homogeneous and glare-free illumination
- Cost-effective and economical with the most modern LED technology
- Complies with EN81 - 20 / 50
- Mirror the space for more visual depth
- Individualizable in shape, color, and function
- Individual logos can be incorporated
- Available with IP20 protection, IP65 and manufacturable as desired

DESIGN TWO



DESIGN ONE



YES - It is a full-fledged lighting!

The new idea.cascado series is exclusive, extravagant and customizable! The colors are freely selectable from cold warm white! With a high luminosity through an ideal reflection, the passively illuminating LEDs, we can offer you LEDs with up to 8.400 lm light intensity.

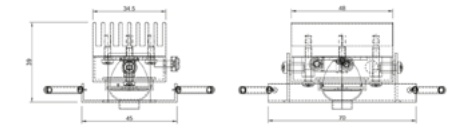
An exciting structure, provided with a reflective background, the idea.cascado series provides a new experience and an unprecedented effect!

idea.spot

Light! Invisible!



idea.spot is the name for a small but fine product with unimaginable values. The extension of our idea. - Series is a true lighting miracle! The most advanced LED technology generates a lot of light with minimal consumption. The light output of the LED lighting is only **8.5mm** in size and generates up to **1000 lumens**. Depending on the cabin size, you only need one spot in one room or our cabin ceiling for elevators. An LED spot consumes only **6 watts**. This value is phenomenal considering that a 60W bulb produces 730 lumens. If you are interested in a demonstration, please contact us! If you have further questions about the execution and implementation, we are happy to help you personally.



Mounting Type: Ceiling Bulb
 Type: LED Light color: 4.000K
 Protection: IP20 Maximum power: 6W
 Max. Luminous flux: 660lm
 Beam angle: 2x38 ° (tenth angle)

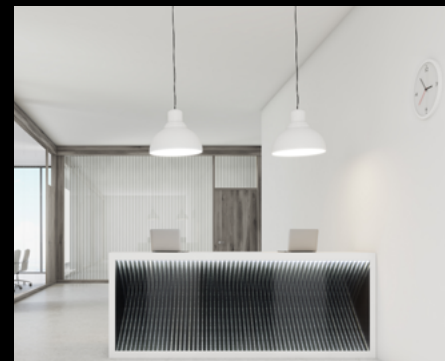
By May 2018 there will be a standard version of our cabin ceiling to buy! You get a little insight here. For individual solutions please contact us.



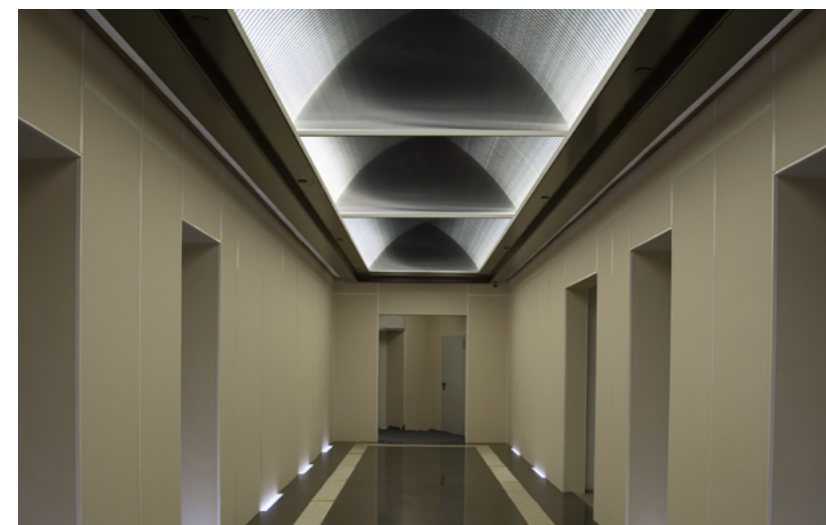
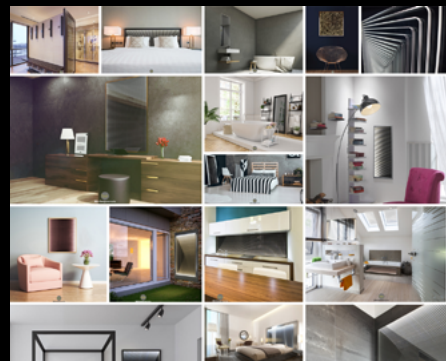
Conclusion

Projects, Informations & Special

Projects are important to us to gain new experiences. They expand our horizons. They also help us to become aware of problems and how to solve them. These are projects in which the well-being of the people is in the foreground. We deal with private as well as commercial spaces that lack space and / or where we can create a more comfortable feeling. With projects such as small dressing rooms or yachts interiors, we highlight issues that should be a thing of the past. Light is vital. We create a product that helps people to feel well, feel well, and eliminate the fear from limited spaces! For example, with our elements we can make the lack of space in an aircraft bearable. The depth effect would suggest safety to the brain here. To the aspect of the depth effect and the benefit comes the eye-catching and new design. Lines of light that create a third dimension on a reflective material is a whole new kind of design. This design is as simple as it is ingenious. It creates space on a limited area, a design that you look at again and again.



This design is versatile: e.g. as an eyecatcher in reception halls or individualized with a company logo, as a in a bar or in a garden. As home lighting, the architects enable new design approaches. Both in the four walls as well as outside. As you can see, our products are versatile and we can realize your ideas and wishes. We are working on a well-designed future. A well-lit future in which small rooms seem larger and large rooms are more comfortable. A bright spot for everyone! We look forward to receiving your inquiries! BBH- Designelemente GmbH.



Contact

BBH-Designelemente GmbH
Loher Straße 6
58339 Breckerfeld GERMANY

Phone: **+49 (0) 2338 873 12 60**

E-Mail: **info@bbh-designelemente.de**

www.bbh-designelemente.de

Follow us on: Facebook, Instagram, Stilpunkte,
Homify and Houzz



BBH-Designelemente